



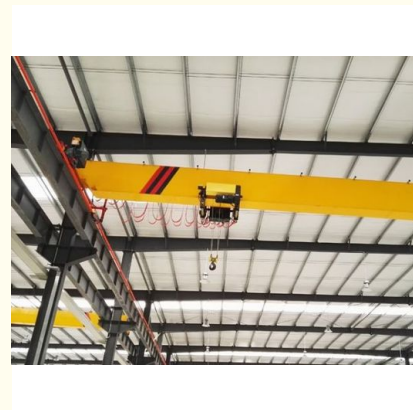
0-50m Lifting Height Material Handling Overhead Crane / Steel Products EOT Crane

Our Product Introduction

for more products please visit us on port-crane.com

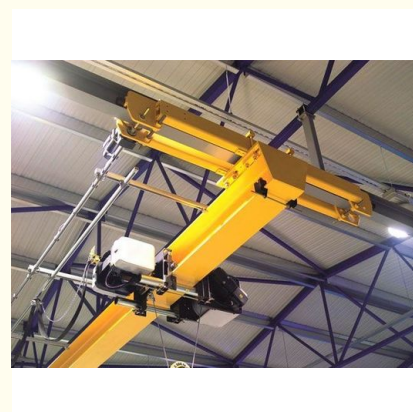
Basic Information

- Place of Origin: Shandong Province, China
- Brand Name: Lucheng Co., Ltd
- Model Number: European style crane
- Minimum Order Quantity: 1
- Price: interview
- Delivery Time: 10-15 days shipping
- Payment Terms: L/C, T/T
- Supply Ability: 3set/week



Product Specification

- Lifting Height: 0-50m
- Tonnage: Customizable
- Product Material: Steel Products
- New And Old Degree: Brand New
- Operation Form: Air Operation/remote Operation
- Colour: Customizable
- Brand: Lucheng Co., Ltd
- Production Country: China
- Highlight: 50m eot crane,
50m material handling overhead crane,
lifting eot crane



Product Description

Product Description:

One of the key features of this European style crane is its ability to support processing customization. This means that customers can request for specific modifications to be made to the crane based on their unique lifting needs. Additionally, the crane is available in on-demand customization quantities, which ensures that customers can get the exact number of cranes they need for their projects. The European style crane is suitable for a wide range of applications, including construction, manufacturing, and logistics. Its sturdy steel construction ensures that it can handle heavy loads with ease, while its air and remote operation forms make it easy to control and maneuver. Whether you need to lift heavy machinery, construction materials, or other heavy objects, the European style crane is up to the task.

This crane is designed to meet the highest safety standards, with features such as overload protection and emergency stop buttons. It also comes with a range of accessories, including hooks, slings, and shackles, which ensure that you have everything you need to get started with your lifting operations.

In summary, the European style crane is a versatile and reliable lifting equipment that is suitable for a wide range of applications. Its durable steel construction, customizable features, and safety features make it a top choice for customers in the European market.

Whether you need a crane for a construction site, manufacturing plant, or logistics operation, the European style crane is a great option to consider.

Features:

Product Name: European crane

Tonnage: Customizable

Product Material: Steel Products

New and Old Degree: Brand New

Applicable Scope: Industrial Factory Terminal

Lifting Height: 0-50m

Technical Parameters:

Colour:	Customizable
Tonnage:	Customizable
Production Country:	China
Increase Quantity:	On Demand Customization
Brand:	Lucheng Co., Ltd
Processing Customization:	Yes
Product Material:	Steel Products
Applicable Scope:	Industrial Factory Terminal
Lifting Height:	0-50m

Applications:

With a variety of tonnage options available, this crane is perfect for use in industrial factory terminals where heavy loads need to be moved quickly and safely. The European style crane from Lucheng Co., Ltd is made in Shandong Province, China and is designed to meet the highest quality standards.

Whether you need air operation or remote operation, this crane is designed to provide you with the flexibility you need to get the job done. It is also capable of processing customization, which means you can tailor the crane to fit your unique needs and requirements.

If you're looking for a crane that is reliable, efficient, and customizable, the European style crane from Lucheng Co., Ltd is the perfect choice. With its superior lifting capacity and flexible operation options, this crane is sure to meet all your lifting needs.

Customization:

Looking for a high-quality European style crane that can fulfill your industrial lifting requirements? Look no further than Lucheng Co., Ltd! Our European style crane is manufactured in Shandong Province, China from top-grade steel products, ensuring durability and reliability in every use. With customizable tonnage and lifting heights of up to 50m, our crane is suitable for a wide range of applications.

Our brand new European style crane is designed to meet the highest industry standards, and is manufactured in China with strict quality control measures in place. We also offer product customization services to meet your specific needs, so you can get the perfect crane for your industrial lifting requirements.

Choose Lucheng Co., Ltd for your European style crane needs and experience the difference in quality and performance!

Support and Services:

Our European crane product comes with comprehensive technical support and services to ensure that you get the most out of your investment. Our team of experts is available to assist you with any technical issues you may encounter, from installation and setup to troubleshooting and maintenance.

We provide regular maintenance checks to keep your crane in top condition, ensuring maximum uptime and productivity. We also offer on-site repairs and replacement parts to minimize downtime and keep your operations running smoothly.

Our technical support services include training sessions for operators and maintenance personnel, as well as on-demand technical assistance via phone or email. We are committed to providing timely and effective solutions to any issues you may face, so you can stay focused on your operations.

Packing and Shipping:

Product Packaging:

The European crane product will be securely packed in a wooden crate to ensure safe delivery.

The product will be wrapped in protective material to prevent any damage during transit.

The packaging will be labeled with the product name, description, and handling instructions.

Shipping:

The European crane product will be shipped via a reputable shipping company.

The shipping cost will be calculated based on the weight and dimensions of the product and the destination.

The product will be shipped to the address provided by the customer.

The customer will be provided with a tracking number to monitor the delivery status of the product.



FAQ:

Q: What is the brand name of the European crane product?

A: The brand name of the European crane product is Lucheng Co., Ltd.

Q: What is the model number of the European crane product?

A: The model number of the European crane product is European style crane.

Q: Where is the European crane product manufactured?

A: The European crane product is manufactured in Shandong Province, China.

Q: What is the lifting capacity of the European crane product?

A: The lifting capacity of the European crane product varies depending on the specific model. Please refer to the product specifications for more information.

Q: Does the European crane product come with a warranty?

A: Warranty information may vary depending on the specific model and distributor. Please contact your local distributor for more information.



Lucheng Co., Ltd.



+8615269855777



197501990@qq.com



port-crane.com

Shihezhuang Village, Yangliu Town, Xintai City, Tai'an City, Shandong Province, China