



1ton 2ton 5ton Tonnage Electric European Overhead Crane / Industrial Eot Crane

Our Product Introduction

for more products please visit us on port-crane.com

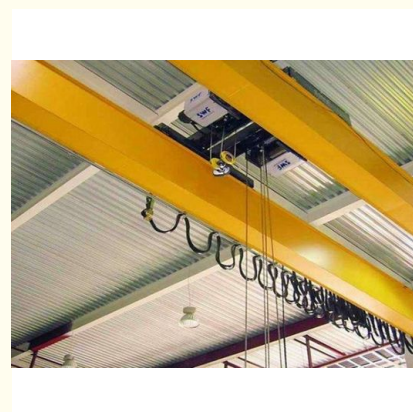
Basic Information

- Place of Origin: Shandong Province, China
- Brand Name: Lucheng Co., Ltd
- Model Number: European style crane
- Minimum Order Quantity: 1
- Price: interview
- Delivery Time: 10-15 days shipping
- Payment Terms: L/C, T/T
- Supply Ability: 3set/week



Product Specification

- Brand: Lucheng Co., Ltd
- Tonnage: Customizable
- Product Material: Steel Products
- New And Old Degree: Brand New
- Increase Quantity: On Demand Customization
- Operation Form: Air Operation/remote Operation
- Colour: Customizable
- Highlight: **1ton industrial eot crane,
1ton european overhead crane,
2ton industrial eot crane**



Product Description

Product Description:

Our European style crane is designed to meet the needs of modern industries. It is built to last, using only the highest quality materials and components. This ensures that our crane is both durable and reliable, delivering consistent performance over time. Whether you need to lift heavy loads or move large objects, our crane is up to the task.

One of the key benefits of our European style crane is its versatility. It can be customized to meet the specific needs of your operation, with an increase in quantity available on demand. This means that you can tailor the crane to your exact requirements, ensuring that it is perfectly suited to your needs.

So if you're looking for a top-quality European style crane for your industrial factory terminal, look no further than our brand new, Chinese-produced crane. With lifting heights of up to 50m and a focus on durability and reliability, it is the perfect choice for any industrial operation.

Features:

Product Name: European crane

Operation form: Air Operation/remote Operation

Tonnage: Customizable

New and old degree: Brand New

Lifting height: 0-50m

Technical Parameters:

Tonnage	Customizable
Operation form	Air Operation/remote Operation
Applicable scope	Industrial Factory Terminal
Increase quantity	On Demand Customization
Product material	Steel Products
New and old degree	Brand New
Does it support processing customization	Yes
Production country	China
Colour	Customizable

Applications:

Lucheng Co., Ltd's European style crane is a versatile product suitable for a variety of occasions and scenarios. Its superior design and construction make it a reliable choice for customers looking for high-quality cranes.

One common use for the European style crane is in construction sites. With its customizable tonnage and lifting height of up to 50m, it can easily lift and move heavy materials and equipment, making it an essential tool for any construction project.

In addition to construction, the European style crane is also ideal for use in manufacturing and industrial settings. Its precise and efficient lifting capabilities make it perfect for moving heavy machinery and materials within factories and warehouses.

The European style crane is also well-suited for use in ports and shipping yards. Its ability to lift and move large containers and cargo makes it an indispensable tool for loading and unloading ships and transporting goods across the port.

Another potential application for the European style crane is in the energy sector. Its strong lifting capabilities make it well-suited for use in power plants and other energy facilities, where heavy machinery and equipment need to be moved and positioned with precision.

Overall, Lucheng Co., Ltd's European style crane is a versatile and reliable product that can be customized to meet the needs of a wide range of industries and applications. Its brand new degree ensures that it will perform at peak efficiency for years to come, making it a smart investment for any business or organization in need of a high-quality crane.

Customization:

Our product customization services for the Lucheng Co., Ltd European style crane include:

Brand Name: Lucheng Co., Ltd

Model Number: European style crane

Place of Origin: Shandong Province, China

New and old degree: Brand New

Operation form: Air Operation/remote Operation

Production country: China

Product material: Steel Products

Applicable scope: Industrial Factory Terminal

Our European style crane is designed and manufactured to meet the specific needs of industrial factory terminals. Whether you need air

or remote operation, our brand new steel product is ready to provide reliable and efficient performance. All of our cranes are produced in China, in the province of Shandong, ensuring the highest quality standards. Contact us today to learn more about our product customization services for the European style crane.

Support and Services:

Our European crane product comes with comprehensive technical support and services to ensure the optimal performance and longevity of your crane. Our team of expert technicians are available to assist with any technical issues you may encounter, offering prompt and effective solutions to minimize downtime and maximize productivity.

Our technical support and services include:

Installation and commissioning

Regular maintenance and inspections

Repairs and troubleshooting

Upgrades and retrofits

Training and education

Our goal is to provide you with the highest level of customer satisfaction through our reliable and efficient technical support and services. Contact us today to learn more about how we can assist you with your European crane product.

Packing and Shipping:

Product Packaging:

This European crane product will be packaged carefully to ensure that it arrives at its destination in perfect condition. The product will be wrapped securely in bubble wrap and packed in a sturdy cardboard box.

Shipping:

We offer international shipping for this product, with delivery times varying depending on the location. Shipping fees will be calculated at checkout. Please note that customers are responsible for any customs or import duties that may apply in their country.



FAQ:

Q: What is the brand name of the crane?

A: The brand name of the crane is Lucheng Co., Ltd.

Q: What is the model number of the crane?

A: The model number of the crane is European style crane.

Q: Where is the crane manufactured?

A: The crane is manufactured in Shandong Province, China.

Q: What is the weight capacity of the European style crane?

A: The weight capacity of the European style crane varies depending on the specific model and configuration. Please refer to the product specifications for more information.

Q: What is the warranty on the European style crane?

A: Warranty information can be found in the product manual or by contacting our customer service department.



Lucheng Co., Ltd.

+8615269855777

197501990@qq.com

port-crane.com

Shihezhuang Village, Yangliu Town, Xintai City, Tai'an City, Shandong Province, China

