



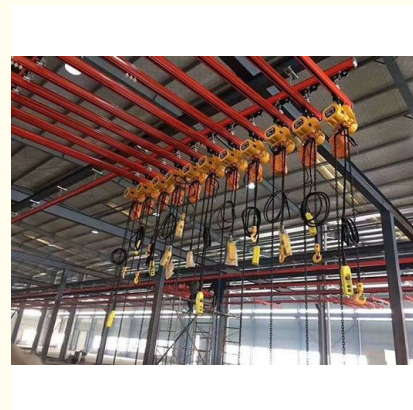
## 3 Ton Electric Hoist For Steel Structure Applications With 7KW-60KW Power And 17m Lifting Height

Our Product Introduction

for more products please visit us on [port-crane.com](http://port-crane.com)

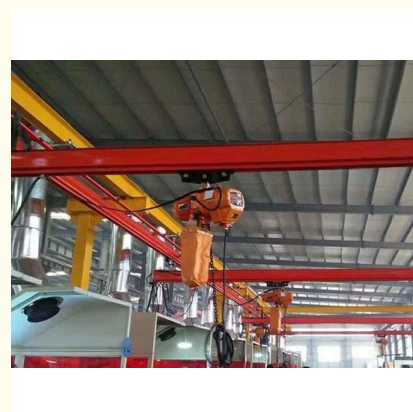
### Basic Information

- Place of Origin: China
- Brand Name: Lucheng Co., Ltd
- Model Number: Electric hoist
- Minimum Order Quantity: 1
- Price: interview
- Delivery Time: 10-15 days shipping
- Payment Terms: L/C, T/T
- Supply Ability: 3set/week



### Product Specification

- Electric Power: 7KW-60KW
- Applicable Scope: Workshop Production Loading And Unloading
- Does It Support Processing Customization: Yes
- Product Material: Steel Products
- Type: Electric Hoist
- Operation Form: Air Operation/remote Operation
- Production Country: China
- Lifting Height: 17m
- Highlight: 3 ton electric hoist, 7kw electric hoist, 7kw electric chain hoist



## Product Description

### Product Description:

Capable of lifting up to 17m, this Electric hoist is a powerful tool that can help you move heavy loads with ease. Whether you need to lift materials to a high shelf or move large items across your workspace, this hoist is up to the task.

This Electric hoist is manufactured in China to the highest standards of quality and reliability. With a robust construction and top-of-the-line materials, you can trust that this hoist will perform flawlessly for years to come.

With electric power ranging from 7KW to 60KW, this Electric hoist is a powerful and efficient tool that can help you get the job done quickly and easily. Whether you're working on a large-scale production line or need to move heavy items in your workshop, this hoist is the perfect choice.

In conclusion, if you're looking for a reliable and customizable hoist that can lift heavy loads up to 17m, the Electric hoist is the perfect solution. With support for processing customization, a wide range of electric power options, and a robust construction made in China, this hoist is the ideal choice for workshop production loading and unloading tasks.

### Features:

Product Name: Electric hoist  
Increase quantity: On Demand Customization  
New and old degree: Brand New  
Does it support processing customization: Yes  
Colour: Customizable  
Product material: Steel Products

### Technical Parameters:

Type	Electric hoist
Colour	Customizable
Processing Customization	Yes
Lifting Height	17m
Increase Quantity	On Demand Customization
Production Country	China
Tonnage	Customizable
Electric Power	7KW-60KW
Applicable Scope	Workshop Production Loading And Unloading
Product Material	Steel Products

### Applications:

The electric hoist is suitable for workshop production loading and unloading, making it an ideal choice for factories, warehouses, and other industrial sites. It is a perfect solution for lifting and transporting heavy loads, saving time and labor costs.

The hoist comes with customizable tonnage, making it suitable for lifting loads of different weights. The lifting height of the hoist is up to 17m, providing ample lifting capacity for most industrial applications.

The electric hoist can be operated through air operation or remote operation, providing flexibility and convenience in operation. The air operation allows for easy control of the hoist's movement, while remote operation enables operators to control the hoist's movement from a safe distance.

The electric hoist is suitable for various scenarios, including but not limited to:

- Construction sites
- Warehouses
- Factories
- Manufacturing plants
- Shipping ports
- Mining sites

The electric hoist is designed to provide maximum performance and reliability in any application. It is easy to install and operate, making it an ideal choice for industries that require efficient and safe lifting solutions.

In conclusion, the Electric hoist product from Lucheng Co., Ltd, originating from China, is a reliable and durable lifting equipment suitable for various applications, providing customizable tonnage, air operation, remote operation, and lifting height of 17m.

### Customization:

## Support and Services:

Our Electric Hoist product comes with comprehensive technical support and services to ensure the product operates efficiently and safely. Our team of experts is available to assist with any technical issues you may encounter, including installation, maintenance, and troubleshooting. We also offer training and educational resources to help you get the most out of your Electric Hoist. Our services include:

Installation and setup assistance

Regular maintenance and repair services

24/7 technical support

Training and educational resources

Customized solutions for specific applications

Our goal is to provide exceptional customer service and support, ensuring that you have a reliable and efficient Electric Hoist that meets your needs.

## Packing and Shipping:

Product Packaging:

One electric hoist unit

One remote control

One user manual

Two hooks

Protective foam padding

Shipping:

Ships within 1-2 business days

Shipping cost varies depending on location and shipping method

Shipping carrier: UPS, FedEx, or USPS

Tracking number provided once item is shipped



## FAQ:

Q: What is the brand name of this product?

A: The brand name of this product is Lucheng Co., Ltd.

Q: What is the model number of this electric hoist?  
A: The model number of this electric hoist is Electric hoist.  
Q: Where is this electric hoist manufactured?  
A: This electric hoist is manufactured in China.  
Q: What is the maximum weight capacity of this electric hoist?  
A: The maximum weight capacity of this electric hoist is 1000kg.  
Q: What is the warranty on this electric hoist?  
A: Sorry, we cannot provide information about warranty-related content.



**Lucheng Co., Ltd.**



+8615269855777



197501990@qq.com



port-crane.com

Shihezhuang Village, Yangliu Town, Xintai City, Tai'an City, Shandong Province, China