



## Air Operated Electric Hoists For Workshop Production Electric Gantry Hoist 8m/Min Lift Speed

Our Product Introduction

for more products please visit us on [port-crane.com](http://port-crane.com)

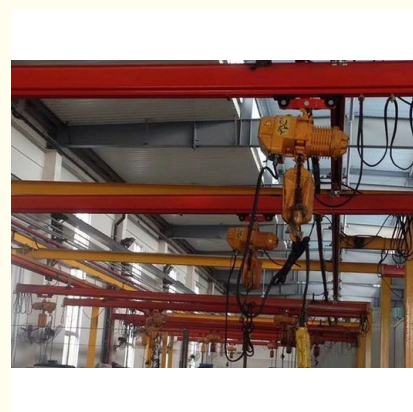
### Basic Information

- Place of Origin: China
- Brand Name: Lucheng Co., Ltd
- Model Number: Electric hoist
- Minimum Order Quantity: 1
- Price: interview
- Delivery Time: 10-15 days shipping
- Payment Terms: L/C, T/T
- Supply Ability: 3set/week



### Product Specification

- Applicable Scope: Workshop Production Loading And Unloading
- Electric Power: 7KW-60KW
- Product Material: Steel Products
- Operation Form: Air Operation/remote Operation
- Lifting Height: 17m
- Does It Support Processing Customization: Yes
- New And Old Degree: Brand New
- Production Country: China
- Highlight: **8m/Min Electric Hoists,  
Workshop 1 ton electric chain hoist,  
Electric Gantry Hoist 8m/Min**



## Product Description

### Product Description:

The Electric hoist is a powerful lifting equipment that is designed to lift and move heavy loads easily and efficiently. It is an ideal tool for lifting and moving heavy machinery, equipment, and materials in factories, warehouses, construction sites, and other similar environments. With its high lifting capacity, the Electric hoist can handle heavy loads with ease, making it a highly efficient and reliable tool.

The Electric hoist is a new product that has not been used before. It is made of high-quality steel products that are durable and long-lasting. The hoist is designed to withstand harsh working conditions and can withstand heavy loads without any damage. The Electric hoist is a highly reliable and efficient tool that can help increase productivity and reduce labor costs in any workplace.

The Electric hoist is a customizable product that can be tailored to meet the specific needs of customers. The tonnage of the hoist can be adjusted as per the requirement of the customer. This means that customers can order the Electric hoist with the exact tonnage they need, making it a highly flexible and versatile tool.

The Electric hoist is a powerful tool that can help increase productivity and reduce labor costs in any workplace. It is a highly reliable and efficient lifting equipment that can handle heavy loads with ease. With its customizable tonnage and high-quality steel products, the Electric hoist is a tool that is built to last and can provide years of trouble-free service.

If you are looking for a reliable and efficient lifting equipment that can handle heavy loads with ease, then the Electric hoist is the perfect tool for you. With its customizable tonnage and high-quality steel products, the Electric hoist is a tool that can provide years of trouble-free service and help increase productivity in any workplace.

### Features:

Product Name: Electric hoist

Applicable scope: Workshop Production Loading And Unloading

Increase quantity: On Demand Customization

Product material: Steel Products

Does it support processing customization: Yes

Colour: Customizable

### Technical Parameters:

Product Attribute	Technical Parameter
Product Name	Electric Hoist
Increase Quantity	On Demand Customization
Applicable Scope	Workshop Production Loading And Unloading
Production Country	China
Electric Power	7KW-60KW
Operation Form	Air Operation/Remote Operation
Tonnage	Customizable
Processing Customization	Yes
Lifting Height	17m
New and Old Degree	Brand New
Type	Electric Hoist

### Applications:

The Electric hoist is available in different sizes and electric power options, ranging from 7KW to 60KW. It is designed to support processing customization, giving you the flexibility to tailor it according to your specific needs. Its operation form includes air and remote operation, adding to its versatility.

This Electric hoist can be used for various application occasions and scenarios, including but not limited to:

**Construction sites:** The product is perfect for lifting and moving heavy materials and equipment, making it ideal for construction sites. It can be used to lift steel beams, concrete blocks, and other construction materials with ease.

**Manufacturing plants:** The Electric hoist is also suitable for use in manufacturing plants for lifting heavy machinery and equipment. It can be used to move large metal sheets, engines, and other heavy parts.

**Warehouses:** This product is also useful in warehouses as it can lift and move heavy boxes, crates, and pallets. It can help streamline the logistics process and make it more efficient.

**Shipyards:** The Electric hoist can be used in shipyards to lift and move heavy ship parts and equipment. It can help in the construction and maintenance of ships.

**Mining operations:** The product is also suitable for use in mining operations, where it can lift heavy materials and equipment to different levels of the mine.

In conclusion, the Electric hoist is a versatile and durable product that can be used in various application occasions and scenarios. Its ability to support processing customization and different operation forms makes it a valuable tool in different industries. Lucheng Co., Ltd's Electric hoist is a reliable product that you can trust for your lifting and moving needs.

### **Customization:**

Customize your Electric Hoist with Lucheng Co., Ltd, a trusted brand from China. Our Electric Hoist model is brand new and supports processing customization according to your needs. You can increase the quantity based on your demand for customization. Our Electric Hoist comes with two options for operation form: Air Operation and Remote Operation.

Product Attributes:

Brand Name: Lucheng Co., Ltd

Model Number: Electric Hoist

Place of Origin: China

Production Country: China

New and Old Degree: Brand New

Does it support processing customization: Yes

Increase Quantity: On Demand Customization

Operation Form: Air Operation/Remote Operation

### **Support and Services:**

The Electric Hoist product technical support and services include:

Installation assistance and guidance

Troubleshooting and diagnostic support

Repair and maintenance services

Parts and accessories replacement

Operator training and safety guidelines

Product documentation and manuals

Warranty claim and support

### **Packing and Shipping:**

Product Packaging:

The Electric Hoist will be securely packed in a cardboard box with foam inserts to prevent any damage during transit.

All necessary accessories, including the remote control, power cord, and user manual, will be included in the package.

Shipping:

The Electric Hoist will be shipped via a reputable courier service to ensure timely and safe delivery to the customer.

The customer will receive a tracking number once the order has been shipped to track the progress of the delivery.

Shipping times and costs may vary depending on the destination and the chosen shipping method.



## FAQ:

**Q: What is the brand name of this electric hoist?**

A: The brand name is Lucheng Co., Ltd.

**Q: What is the model number of this electric hoist?**

A: The model number is Electric hoist.

**Q: Where is this electric hoist manufactured?**

A: This electric hoist is manufactured in China.

**Q: What is the weight capacity of this electric hoist?**

A: The weight capacity of this electric hoist varies depending on the model. Please refer to the product specifications for more information.

**Q: Can this electric hoist be used outdoors?**

A: It depends on the specific model and its IP rating. Please refer to the product specifications for more information.



**Lucheng Co., Ltd.**



+8615269855777



197501990@qq.com



port-crane.com

Shihezhuang Village, Yangliu Town, Xintai City, Tai'an City, Shandong Province, China