



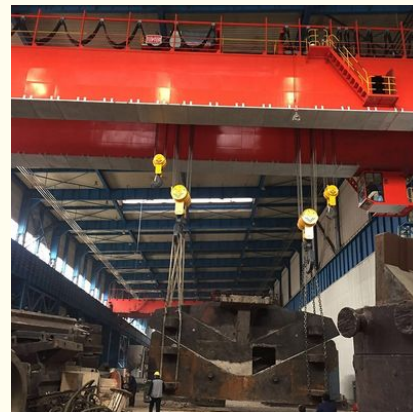
Lucheng Custom Q235B / Q345B Steel Metallurgical Crane With 3phase AC Power

Our Product Introduction

for more products please visit us on port-crane.com

Basic Information

- Place of Origin: Shandong Province, China
- Brand Name: Lucheng Co., Ltd
- Model Number: Metallurgical crane
- Minimum Order Quantity: 1
- Price: interview
- Delivery Time: 10-15 days shipping
- Payment Terms: L/C, T/T
- Supply Ability: 3set/week



Product Specification

- Operation Form: Remote-controlled Operation
- Main Material: Q235B/Q345B Steel
- New And Old Degree: Brand New
- Does It Support Processing Customization: Yes
- Brand: Lucheng Co., Ltd
- Types Of: Metallurgical Crane
- Production Country: China
- Tonnage: Customizable
- Highlight: **steel metallurgical crane,
custom metallurgical crane,
custom factory overhead crane**



Product Description

Product Description:

With a lifting capacity ranging from 1-500T, this crane is perfect for a wide range of applications, from industrial and construction sites to ports and shipyards. Its 3-phase AC power supply, operating at 50Hz and 380V, ensures efficient and reliable performance, while the remote-controlled operation allows for easy and safe handling of heavy loads.

As a brand new product, you can trust that the Metallurgical crane is free from defects and designed to meet the highest standards of quality. Made in China, this crane is produced under strict manufacturing guidelines and undergoes rigorous testing to ensure optimal performance and durability.

The Metallurgical crane is a versatile and reliable solution for all of your heavy lifting needs. Whether you're working in the metallurgical industry or any other field that requires heavy lifting capabilities, this crane is the perfect choice. Contact us today to learn more about this powerful and innovative product and how it can benefit your business.

Features:

Product Name: Metallurgical crane

Main Material: Q235B/Q345B Steel

Product material: Steel Products

Type of: Metallurgical Crane

Tonnage: Customizable

Production country: China

Introducing the Metallurgical crane, a powerful and durable crane made of Q235B/Q345B steel. This crane is specifically designed for use in metallurgical applications and is customizable to meet your specific tonnage needs. Made in China with high-quality steel products, the Metallurgical crane is built to last and handle even the toughest jobs.

Technical Parameters:

Production country	China
Power Supply	3-phase AC, 50Hz, 380V
Does it support processing customization	Yes
Main Material	Q235B/Q345B Steel
Types of	Metallurgical Crane
Product material	Steel Products
Brand	Lucheng Co., Ltd
Lifting height	0-50m
Tonnage	Customizable
New and old degree	Brand New

Applications:

The Metallurgical crane produced by Lucheng Co., Ltd is a high-quality lifting equipment that is widely used in various industries. With a lifting capacity ranging from 1T to 500T and a lifting height of 0-50m, this crane is suitable for lifting heavy objects in a variety of scenarios.

The Metallurgical crane is made of high-quality steel products, ensuring its durability and stability during the lifting process. It is a brand new product, guaranteeing its excellent performance and reliability.

The effective lifting height of the Metallurgical crane ranges from 9m to 30m, making it ideal for use in metallurgical plants, steel mills, and other heavy industries. It can be used to lift and transport materials such as steel plates, steel pipes, and other heavy objects.

The Metallurgical crane is suitable for use in various scenarios, including lifting and transporting heavy objects in factories, warehouses, and other industrial sites. It is also commonly used in construction sites and ports, where it can be used to load and unload heavy cargo from ships and trucks.

Whether you need to lift heavy objects in a metallurgical plant or transport materials in a construction site, the Metallurgical crane from Lucheng Co., Ltd is the perfect lifting equipment for all your needs. Its high lifting capacity, durable construction, and reliable performance make it an excellent choice for any lifting application.

Customization:

Product Customization Services for the Metallurgical crane:

Brand Name: Lucheng Co., Ltd

Model Number: Metallurgical crane

Place of Origin: Shandong Province, China

Power Supply: 3-phase AC, 50Hz, 380V

Main Material: Q235B/Q345B Steel

Processing Customization: Yes
Lifting height: 0-50m
Effective Lifting Height: 9-30m

Support and Services:

The Metallurgical crane product technical support and services include:

24/7 technical support hotline

On-site installation and commissioning

Regular maintenance and inspection

Remote diagnostic and troubleshooting

Training for operators and maintenance personnel

Upgrades and retrofits

Our team of experts is dedicated to ensuring the optimal performance and safety of your Metallurgical crane product. Contact us for more information.

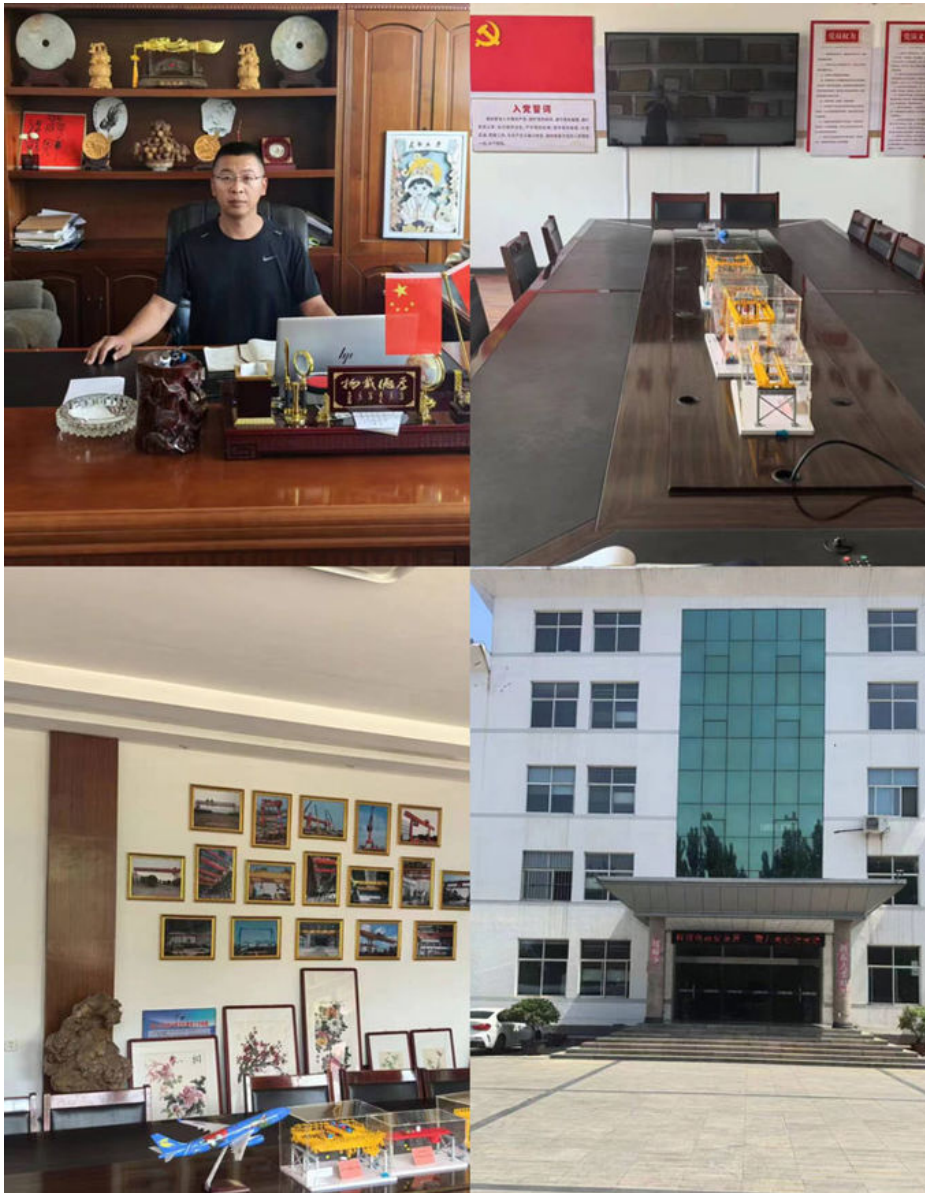
Packing and Shipping:

Product Packaging:

Our Metallurgical crane product will be securely packaged to ensure safe delivery to your location. The packaging will be designed to protect the crane from any possible damage during transportation. All necessary parts and components will be included in the packaging.

Shipping:

We offer worldwide shipping for our Metallurgical crane product. Our team will ensure that the product is shipped to your location in a timely and efficient manner. The shipping cost will depend on the destination and the weight of the package. Once the package is shipped, we will provide you with a tracking number so you can easily track the delivery of your product.



FAQ:

Q: What is the brand name of the metallurgical crane?

A: The brand name of the metallurgical crane is Lucheng Co., Ltd.

Q: What is the model number of the metallurgical crane?

A: The model number of the metallurgical crane is Metallurgical crane.

Q: Where is the metallurgical crane manufactured?

A: The metallurgical crane is manufactured in Shandong Province, China.

Q: What is the lifting capacity of the metallurgical crane?

A: The lifting capacity of the metallurgical crane ranges from 5 tons to 500 tons.

Q: What is the warranty period for the metallurgical crane?

A: We offer a standard warranty period of 12 months for the metallurgical crane. However, we also provide extended warranties as per customer requirements.



Lucheng Co., Ltd.



+8615269855777



197501990@qq.com



port-crane.com

Shihezhuang Village, Yangliu Town, Xintai City, Tai'an City, Shandong Province, China