



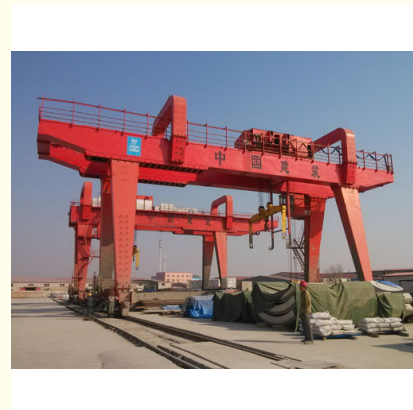
Steel Products Rail Mounted Gantry Cranes 1-500T Lifting Capacity Industrial Terminal Crane

Our Product Introduction

for more products please visit us on port-crane.com

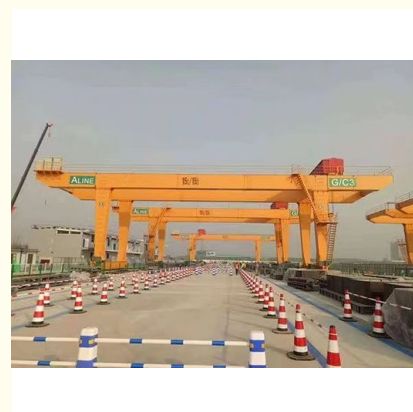
Basic Information

- Place of Origin: Shandong Province, China
- Brand Name: Lucheng Co., Ltd
- Model Number: Gantry crane or rail crane
- Minimum Order Quantity: 1
- Price: interview
- Delivery Time: 10-15 days shipping
- Payment Terms: L/C, T/T
- Supply Ability: 3set/week



Product Specification

- Tonnage: Customizable
- Lifting Capacity: 1-500T
- Does It Support Processing Customization: Yes
- Applicable Scope: Industrial Factory Terminal
- Production Country: China
- Product Material: Steel Products
- Lifting Height: 0-50m
- Painting: Anti-corrosion Paint
- Highlight: **steel gantry cranes, steel rail mounted gantry, 500t gantry cranes**



Product Description

Product Description:

The tonnage of the Gantry crane or rail crane is customizable, which means that it can be tailored to meet the specific needs of different industries. Whether you need a crane for heavy-duty lifting or light-duty applications, the Gantry crane or rail crane can be designed to suit your requirements.

The Gantry crane or rail crane is made of high-quality steel products that ensure durability and longevity. Steel is a robust and reliable material that can withstand the rigors of heavy lifting and harsh working environments. This product is built to last and requires minimal maintenance, making it a cost-effective solution for your lifting and transportation needs.

The Gantry crane or rail crane is manufactured in China, which is renowned for producing high-quality industrial equipment. Chinese manufacturers are known for their attention to detail, quality control, and affordable pricing, making them a popular choice for businesses worldwide.

The Gantry crane or rail crane is available in different sizes and configurations, depending on the application. Whether you need a single girder or a double girder crane, a cantilever or a gantry crane, the Gantry crane or rail crane can be customized to meet your needs.

The Gantry crane or rail crane is designed for on-demand customization, which means that it can be modified to suit your changing needs. Whether you need to increase the lifting height, tonnage capacity, or add additional features, the Gantry crane or rail crane can be tailored to meet your requirements.

In summary, the Gantry crane or rail crane is a versatile, customizable, and durable product made of high-quality steel products. It is manufactured in China and is suitable for a wide range of industries, including factories, warehouses, ports, and construction sites. With its on-demand customization capabilities, the Gantry crane or rail crane can be modified to meet your changing needs, making it a cost-effective solution for your lifting and transportation needs.

Features:

Product Name: Gantry crane or rail crane

Lifting height: 0-50m

New and old degree: Brand New

Product material: Steel Products

Does it support processing customization: Yes

Tonnage: Customizable

Technical Parameters:

Product Attribute	Value
Product Name	Gantry crane or rail crane
Applicable Scope	Industrial Factory Terminal
Operation Form	Air Operation/remote Operation
Tonnage	Customizable
Product Material	Steel Products
Production Country	China
Lifting Height	0-50m
Brand	Lucheng Co., Ltd
Increase Quantity	On Demand Customization
Painting	Anti-corrosion Paint
New and Old Degree	Brand New

Applications:

The Gantry crane or rail crane can be used in a wide range of occasions and scenarios, including:

Construction sites

Manufacturing plants

Warehouses

Ports and docks

Transportation terminals

These cranes are perfect for lifting and moving large machinery, equipment, containers, and other heavy loads in these environments.

With its sturdy construction, the Gantry crane or rail crane is capable of handling even the most challenging lifting tasks. It can be used for both indoor and outdoor applications, and its compact design allows it to be easily positioned and maneuvered in tight spaces.

In addition, the Gantry crane or rail crane is highly reliable and efficient, making it an excellent investment for any business that requires heavy-duty lifting equipment. It can help streamline operations, improve safety, and increase productivity, saving time and money in the long run.

Overall, the Gantry crane or rail crane is an excellent choice for any business that needs a reliable, high-capacity lifting solution. With its

brand new degree and anti-corrosion paint, it is built to last and can be used in a variety of industrial factory terminal applications.

Customization:

Customize your Gantry crane or rail crane with our Product Customization Services:

Painting: Anti-corrosion Paint

Brand: Lucheng Co., Ltd

Increase quantity: On Demand Customization

Applicable scope: Industrial Factory Terminal

Lifting height: 0-50m

Trust Lucheng Co., Ltd to provide you with a reliable and customizable Gantry crane or rail crane for your industrial factory terminal needs.

Support and Services:

Our Gantry crane or rail crane product is designed for heavy-duty applications and is built to withstand tough environments. Our technical support team is available to assist with any installation or maintenance issues that may arise, ensuring that your product operates efficiently and safely. We offer training services to help operators understand the proper use and maintenance of the product to ensure its longevity and safety. In addition, our team can provide customized solutions to meet your specific needs and requirements. Contact us for more information on our technical support and services.

Packing and Shipping:

Product Packaging:

The gantry crane will be carefully placed on a sturdy wooden pallet.

The crane will be securely fastened to the pallet using steel strapping.

The pallet will be covered with shrink wrap for protection during shipping.

A label with the product information and handling instructions will be affixed to the outside of the package.

Shipping:

The gantry crane will be shipped via a freight carrier.

The carrier will be selected based on the customer's location and shipping preferences.

The customer will be provided with a tracking number to monitor the shipment's progress.

The carrier will deliver the package to the customer's specified address.

Upon delivery, the customer should inspect the package for any damage that may have occurred during transit.



FAQ:

A Gantry crane is a type of crane that features a horizontal beam that is supported by legs at both ends. The beam can move along the legs, allowing for the crane to be maneuvered over a large area.

Q: What is a rail crane?

A rail crane is a type of crane that runs on rails, allowing it to move along a set path. Rail cranes are often used in manufacturing or industrial settings where heavy loads need to be transported over a set distance.

Q: What are the weight limits for Gantry cranes?

The weight limit for a Gantry crane will vary depending on the specific model and configuration of the crane. However, most Gantry cranes are capable of lifting up to several tons of weight.

Q: What are the advantages of using a rail crane?

One of the key advantages of using a rail crane is that it can be used to transport heavy loads over a set distance with precision and control. Rail cranes are also highly efficient and can be used to move large volumes of goods quickly and safely.

Q: What safety features do Gantry cranes have?

Gantry cranes typically have a range of safety features including limit switches, overload protection, and emergency stop buttons. These features are designed to ensure that the crane operates safely and reduces the risk of accidents or injury to workers.



Lucheng Co., Ltd.



+8615269855777



197501990@qq.com



port-crane.com

Shihezhuang Village, Yangliu Town, Xintai City, Tai'an City, Shandong Province, China