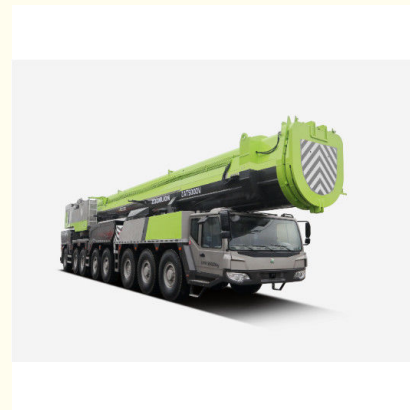


6 Ton 25 Ton Truck Mounted Crane / Telescopic Boom Crane 7KW-60KW

Our Product Introduction

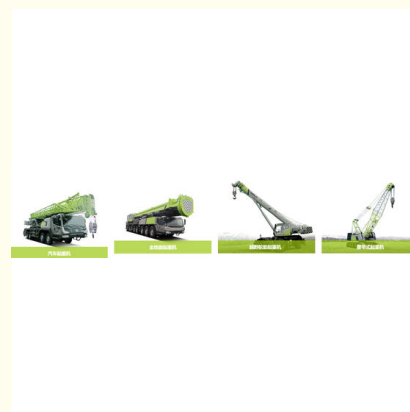
Basic Information

- Place of Origin: Shandong Province, China
- Brand Name: Lucheng Co., Ltd
- Model Number: Steel structure factory building
- Minimum Order Quantity: 1
- Price: interview
- Delivery Time: 10-15 days shipping
- Payment Terms: L/C, T/T
- Supply Ability: 3set/week



Product Specification

- Production Country: China
- Types Of: Truck Crane
- Does It Support Processing Customization: Yes
- Working Range: Warehouse Workshop Dock
- Electric Power: 7KW-60KW
- Applicable Scope: Workshop Production Loading And Unloading
- New And Old Degree: Brand New
- Highlight: telescopic boom crane 7kw, 25 ton truck mounted crane, 7kw truck mounted crane



for more products please visit us on port-crane.com

Product Description

A car crane is a type of crane installed on a regular car chassis or a specially designed car chassis, with a separate driving cab and lifting control room. The advantages of this crane are good maneuverability and quick transfer. The disadvantage is that it requires leg support during work, cannot travel under load, and is not suitable for working on soft or muddy fields. The chassis performance of a car crane is equivalent to that of a heavy-duty truck with the same total vehicle weight, which meets the technical requirements of road vehicles and can therefore travel unobstructed on various roads. This type of crane is generally equipped with two control rooms for getting on and off the vehicle, and the support legs must be extended to maintain stability during operation. The range of lifting capacity is very large, ranging from 8 tons to 1600 tons, and the number of axles on the chassis can range from 2 to 10. It is the most productive and widely used type of crane.



鲁诚股份 Lucheng Co., Ltd.

+8615269855777

197501990@qq.com

port-crane.com

Shihezhuang Village, Yangliu Town, Xintai City, Tai'an City, Shandong Province, China