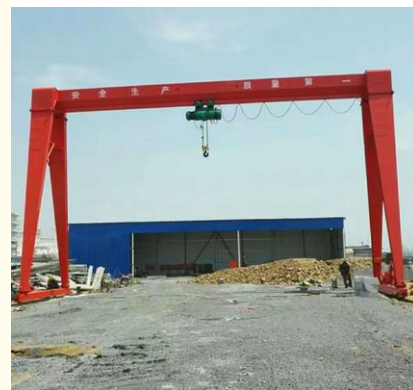


A5 A6 A7 A8 1.5KW Single Girder Crane For Lifting Goods In Different Occasions Such As Factories Warehouses And Material

Our Product Introduction

Basic Information

- Place of Origin: Shandong Province, China
- Brand Name: Lucheng Co., Ltd
- Model Number: Single beam crane
- Minimum Order Quantity: 1
- Price: interview
- Delivery Time: 10-15 days shipping
- Payment Terms: L/C, T/T
- Supply Ability: 3set/week



Product Specification

- Corporate Name: Lucheng Co., Ltd
- Operating Mode: Ground Exercise
- Electric Power: 1.5KW
- Scope Of Application: Warehouse Workshop Building
- Colour: Red Yellow
- Types Of: Single-beam Crane
- Span: 8000mm
- Working Class: A5-A8
- Highlight: 1.5kw single girder crane,
1.5kw overhead crane single girder,
factories single girder crane

for more products please visit us on port-crane.com

Product Description

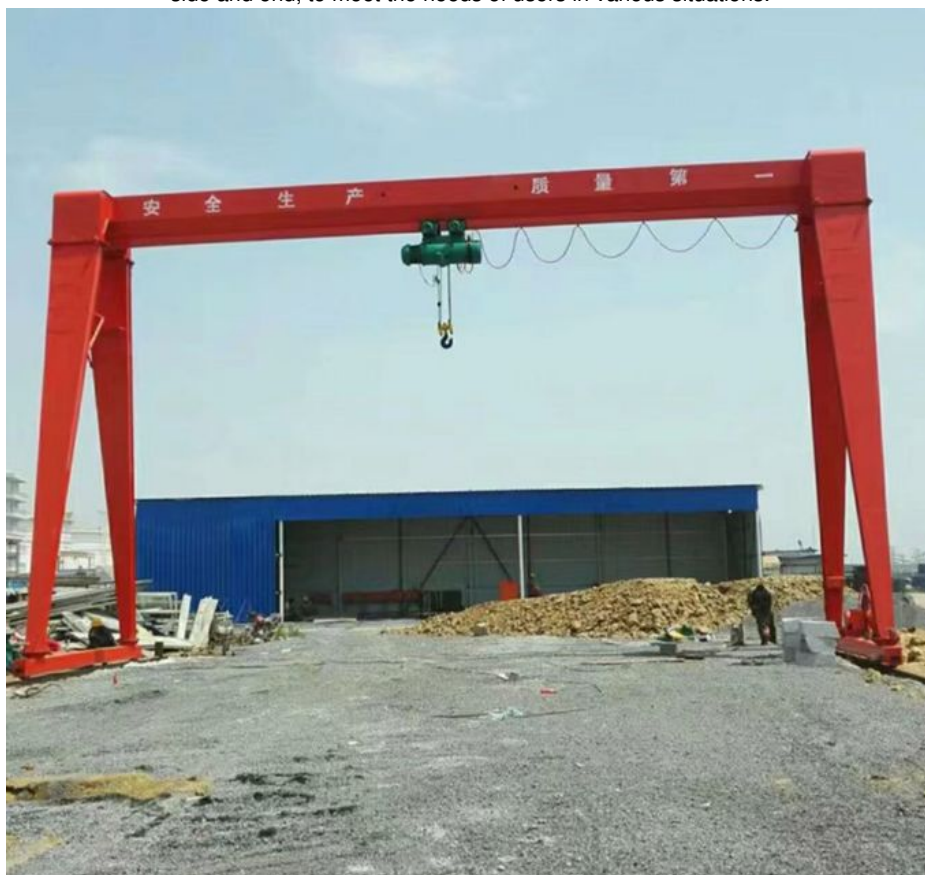
Single beam crane

Equipment widely used in workshops across various industries

Widely used in workshops, warehouses, material yards, and other industries such as mechanical manufacturing workshops, metallurgical workshops, petroleum, petrochemicals, ports, railways, civil aviation, power plants, papermaking, building materials, electronics, etc. It has the advantages of compact external dimensions, low building clearance height, light weight, and low wheel pressure.

Single beam cranes are widely used for lifting goods in different occasions such as factories, warehouses, and material yards. It is prohibited to use them in flammable, explosive, and corrosive media environments.

There are two operating modes available: ground level and control room. There are two types of control rooms: open and closed, which can be installed on the left or right side according to the actual situation. The entrance direction has two types: side and end, to meet the needs of users in various situations.



Lucheng Co., Ltd.



+8615269855777



197501990@qq.com



port-crane.com

Shihezhuang Village, Yangliu Town, Xintai City, Tai'an City, Shandong Province, China